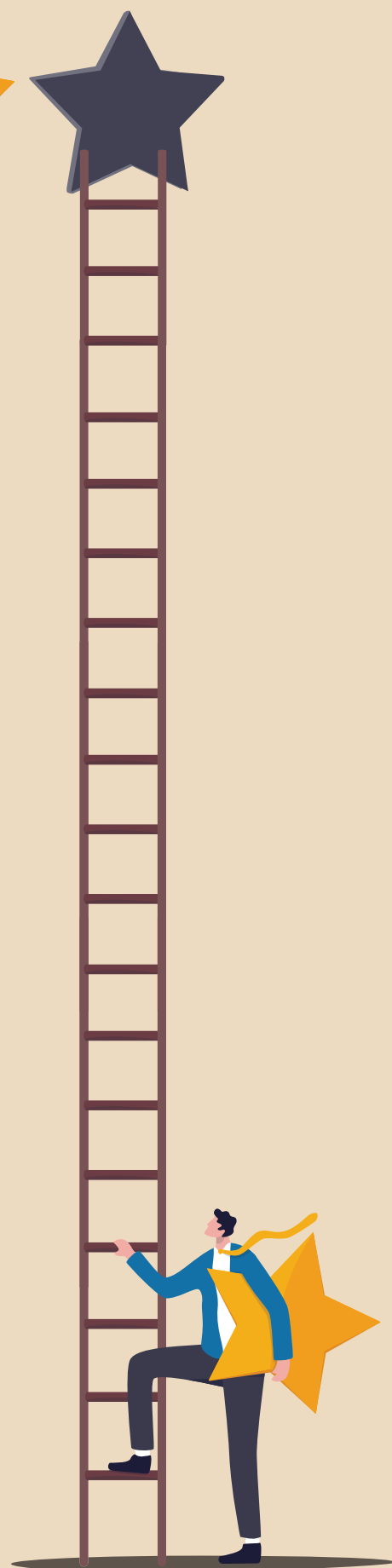




# NZ HIGH SCHOOL RANKED ON UNIVERSITY ENTRANCE FOR LEAVERS

2018 - 2021



# NZ HIGH SCHOOL RANKED ON UNIVERSITY ENTRANCE FOR LEAVERS

## Notes:

1. EQI is the new marginal funding mechanism based on the number of risk factors in a school's student body. Private schools are not allocated an EQI so I have made 350 a proxy for all private schools. State lowest is Hutt International Boys High (365). State highest is Flaxmere College (564). The extra funding for the high EQI schools requires no goal setting or accountability.
  2. "Leavers" data presents a more comprehensive picture than yearly "cohort" data. Other metrics available are; L1, L2, L3 NCEA, Retention until 17, progress to tertiary study.
  3. My highlights (orange) are schools performing much higher than the EQI norm.
- Grab a highlighter and find your school and schools in your area.

Names	Percent of LEAVERS with UE					
	EQI	Roll	2018	2019	2020	2021
Diocesan School For Girls	350	1617	90.7	91.4	94.5	96.6
Woodford House	396	354	91.4	83.3	94	96.2
Auckland International College	350	47	95.2	97.1	96	96
Rangi Ruru Girls' School	350	689	92.5	98.1	94.6	95.4
Samuel Marsden Collegiate School	350	451	89.7	95.6	82.7	95.1
Baradene College	372	1360	93.4	94.5	97.7	94.5
Chilton Saint James School	350	291	71.1	83.9	0	94.3
St Oran's College	378	491	87.3	83.8	92.2	94
St Cuthbert's College (Epsom)	350	1481	93.2	93.2	92.9	93.9
King's College	350	1163	85.7	87	88	93.7
ACG Strathallan	350	990	84.5	87.1	82.5	92.6
Springbank School	350	207	75	72.7	80	92.3
Iona College	394	315	87.2	92.7	96	91.1
Saint Kentigern College	350	2250	82.3	71.4	87.7	89.9
St Peter's College (Epsom)	386	1270	93.8	93	92.5	89.9
Columba College	390	582	89.9	95.8	91.3	89.4
Marist College	397	752	69.2	87.9	78.2	89.4
Carmel College	386	993	82.7	85.1	85.8	89.3
St Margaret's College	350	812	88.1	90.3	93.9	89
Hutt International Boys' School	365	472	82.4	76.5	86.2	88.9
Pinehurst School	350	1056	73.4	92.1	95.3	88.4
St Hildas Collegiate	382	450	79.4	80.8	94.8	88.1
Wellington Girls' College	374	1411	89.2	88.2	82.5	88
ACG Parnell College	350	1474	91.1	81.1	82.2	87.9
St Mary's College (Ponsonby)	383	1004	83	93.3	90.3	87.3
Wentworth College	350	280	77.3	88.9	78.9	86.8
St Andrew's College (Christchurch)	350	1599	82.6	82.4	80.6	86.5
Nga Tawa Diocesan School	425	167	88.9	72.1	77.3	85.7
ACG Sunderland	350	623	72.2	60.7	87	85
Craighead Diocesan School	405	409	73.1	77.6	89.8	84.1
St Paul's College (Ponsonby)	484	387	55.8	77.8	71	84.1
Villa Maria College	407	814	77.4	86.5	83.6	83.9
Waikato Diocesan School For Girls	384	666	88.8	82.6	89.9	83.7
Sancta Maria College	390	1026	72.8	75.9	77	83.3
Westlake Girls' High School	404	2103	79.3	75.7	83.2	81.8
Al-Madinah School	416	563	65.2	43.8	71.4	81.8
St Matthew's Collegiate (Masterton)	397	287	84.1	89.1	92.2	81.1
Macleans College	390	2590	75.4	69.9	79.5	80.5
Sacred Heart College (Auckland)	391	1270	64.5	71.9	79	80.3
Rangitoto College	400	3245	70.1	72.2	73.3	80.3
John McGlashan College	386	526	68.8	81.7	75.9	79.7
Epsom Girls Grammar School	397	2099	77.8	77.5	79	79.1
ACG Tauranga	350	365	x	0	70	78.9
Auckland Grammar	385	2579	76.8	76.8	74.9	78.9
Scots College	350	1046	79.5	77.6	88.5	78.3
Elim Christian College	381	1281	59.5	60.6	65.9	76.7
Manukura	498	170	79.6	81.3	86.7	76.5

Percent of LEAVERS with UE						
Names	EQI	Roll	2018	2019	2020	2021
Aquinas College	397	747	72.2	67.3	72.3	76.3
OneSchool Global - New Zealand	350	1499	65	64.3	66.9	75.6
Wellington College	379	1693	76.3	80.9	74.6	75.2
Huanui College	350	332	63.6	60.9	63.6	75
Michael Park School	392	349	34.6	53.6	69.6	75
Glendowie College	391	1162	67.1	70	78.5	74.8
Christchurch Girls' High School -Te Kura o Hine Waiora	411	1208	77.8	83.3	81.7	74.3
Christ's College	350	700	82.7	81.3	85.2	74.2
Rosmini College	386	1058	65	71.5	73.7	74.1
Lindisfarne College	396	515	80	80.7	67	74
St Catherines College (Kilbirnie)	428	193	55.6	54.5	79.4	73.7
St Paul's Collegiate (Hamilton)	350	798	76.7	69.6	71	72.8
St Peter's School (Cambridge)	350	1196	62.5	70	70.8	72.8
Roxburgh Area School	471	142	29.4	53.3	20	72.7
Rathkeale College	410	334	65.2	72.9	73.7	72.5
TKKM o Hoani Waititi	506	237	55.6	83.3	75	72.2
Takapuna Grammar School	397	1851	70.3	62.3	66.2	71.8
Whitby Collegiate	350	236	77.8	78.3	82.6	70.8
Selwyn College	420	1376	49.4	55.7	60.3	70.5
Zayed College for Girls	447	140	83.3	50	75.6	70
Westlake Boys High School	399	2471	77.1	73	74.5	69.9
St Dominic's Catholic College (Henderson)	429	810	58.1	58.8	73.6	69.8
St Mary's College (Wellington)	418	533	73.8	72.2	80	69.4
Taikura Rudolf Steiner School	434	309	0	48.4	0	69
Wellington East Girls' College	413	1054	69.8	67.6	69.2	68.7
KingsWay School	392	1592	69	69.5	79.6	68.6
Liston College	496	815	60.2	47.9	66.1	67.7
Christchurch Adventist School	438	262	76.9	52.9	59.1	66.7
Napier Girls' High School	441	967	62	66.5	66	66.7
Palmerston North Girls' High School	435	1206	69.2	73	68.4	66.5
Kavanagh College	429	638	55.6	55.8	64.1	66.3
Auckland Girls' Grammar School	488	1051	41.7	55.2	67	66.3
Onslow College	391	1312	61.2	58.5	65.9	66.2
Otago Girls' High School	434	709	69	73.6	76.3	65.8
McAuley High School	489	774	47.9	62.3	54.8	65.8
Botany Downs Secondary College	408	1741	54.1	57.9	60.4	65.6
Whanganui Collegiate School	416	446	74.7	65.5	68.8	65.5
Dilworth School	350	508	62.5	73.1	77.8	65.2
Long Bay College	422	1469	55.4	53	60.8	64.7
Queen Margaret College	350	623	91.7	90	73.6	63.3
Solway College	428	200	81.8	85.7	48.1	63
Pompallier Catholic College	423	627	55.2	42.2	38.7	62.5
Middleton Grange School	406	1303	64.9	68.5	66.3	62.1
Pakuranga College	431	2041	53.2	57.4	67.1	62.1
Sacred Heart Girls' College (N Plymouth)	418	732	56.3	70.8	76	61.5
Burnside High School	418	2410	59.8	54.4	67.9	60.9
Wakatipu High School	412	1216	54	71	69.7	60.6
Mt Albert Grammar School	419	3055	52.3	49.7	60.3	60.6
Sacred Heart Girls' College (Ham)	428	863	68.3	63.3	71.3	60.6
Havelock North High School	432	1048	54.4	56.5	49.3	60.3
Cashmere High School	418	2125	56.9	58.5	60	60.1
Western Springs College	416	1729	57.2	67.4	67	59.9
Ormiston Senior College	444	958	52.6	47.6	56.7	59.9
Nelson College For Girls	431	793	49.2	53.9	57.2	59.5
Avondale College	441	2670	55.1	58.3	57	59.1
John Paul College	416	1146	59	53.3	61.6	58.8
Rangiora New Life School	431	444	60	51.1	44.9	58.7
Bethlehem College	410	1880	64.1	66.5	62.6	57.7
Northcote College	433	1174	50.2	52.3	51.5	57

Names	Percent of LEAVERS with UE					
	EQI	Roll	2018	2019	2020	2021
Cornerstone Christian School	424	598	62.9	51.6	58.8	56.3
Hamilton Girls' High School	462	1663	50	44.5	47.9	56.3
Albany Senior High School	440	824	49.8	44.8	52.4	56.2
Pukekohe Christian School	350	331	63	69	70	56
Marian College	434	402	62.8	66.7	68.2	56
Rudolf Steiner School (Chch)	408	345				55
Waiheke High School	446	386	39.4	53.2	41.4	53.8
St Bedes College	412	807	57	51.4	57.6	53.6
John Paul II High School	442	182	36.4	45.5	42.4	53.6
Otago Boys' High School	427	824	61	48.5	51.9	53.3
Hobsonville Point Secondary School	436	723	51.8	37.9	55	52.8
Marcellin College	469	645	44.2	25.7	47.3	52.5
St Patrick's College (Kilbirnie)	413	702	59.1	47.2	68.8	52.1
Howick College	430	2050	42.8	43.5	49	52
St Peter's College (Gore)	436	442	43.8	53.6	53.3	51.9
Mt Roskill Grammar	443	1789	53.4	46.7	54	51.7
Lynfield College	420	1711	53.4	56.9	60.6	51.5
Queens High School	477	401	46.4	38.2	37.7	51.2
Mt Aspiring College	412	1198	70.5	65.1	67.6	51.1
Christchurch Boys' High School	413	1347	60.4	52.9	57.8	51.1
Logan Park High School	435	754	41.2	54.4	49	51
Southland Girls' High School	467	1011	48	47.6	53.1	51
Sacred Heart College (Lower Hutt)	442	794	54.7	47.7	55.6	50.6
Waitaki Girls' High School	480	396	50	47.3	49.4	50.5
Hamilton Boys' High School	429	2131	42.8	38.2	47.5	50.3
Fiordland College	432	263	29	57.1	56	50
St Peter's College (Palmerston North)	438	695	55.4	63.5	45.5	50
Whangarei Girls' High School	465	1462	56.5	35.2	41.2	49.7
Newlands College	413	1116	52.1	52.3	58	49.5
Wellington High School and Com Ed Centre	406	1407	40.5	43.4	47.9	48.8
Hamilton Christian School	406	764	42.9	53.6	48.8	48.8
Lincoln High School	420	1389	42	46	54.5	48.7
Blue Mountain College	455	211	40.5	40	46.7	48.7
Garin College	427	567	50	53	55.3	48.6
Green Bay High School	432	1610	37.5	46.3	57.6	48.6
Kapiti College	428	1379	53.2	51.4	62.6	48.5
Marlborough Girls' College	453	913	33.3	43.5	43.5	47.6
St Kevins College (Oamaru)	444	443	40	44.2	53	47.4
New Plymouth Girls' High School	451	1281	56.5	56.9	50.6	47.2
Birkenhead College	462	470	50	42.1	45.9	47.1
Hato Paora College	520	100	75	52.4	48.5	46.7
Francis Douglas Memorial College	417	731	41.2	47.2	46	46.3
Kristin School	350	1666	90.2	87.8	90.2	46.1
St Joseph's Maori Girls' College	516	155	92.3	85.2	68	45.8
Sacred Heart College (Napier)	452	307	53.2	50.9	64	45
St John's College (Hastings)	454	398	61.8	51.3	48	44.4
Tawa College	434	1297	44.3	48	51	44.3
Excellere College	460	274	18.8	56.3	15.4	43.8
Taradale High School	445	1068	36.6	39	48.9	43.5
Mahurangi College	442	1455	48.4	43.5	39.8	43.4
Kerikeri High School	457	1540	34.4	45.9	41	42.8
Cambridge High School	445	1705	43.5	42.2	37.7	42.5
St John's College (Hillcrest)	429	873	32	32.3	27.5	42.4
Orewa College	431	1862	40.8	40.8	50	41.9
Paraparaumu College	438	1329	48.7	43.8	44.7	41.9
Northern Southland College	457	212	22.2	40.9	40.7	41.9
Kings High School (Dunedin)	457	841	44.4	42.3	48.8	41.8
Hillcrest High School	448	1726	40.1	43.4	43.5	41.5
Hutt Valley High School	426	1718	50.3	49.8	47.9	41.4
Catholic Cathedral College	456	462	40.9	46.5	45	41.4

Percent of LEAVERS with UE						
Names	EQI	Roll	2018	2019	2020	2021
Tauranga Girls' College	465	1368	44.8	35.2	49	41
Verdon College	459	697	37.1	37.4	40.2	40.8
Tai Wananga	509	177	35	40	20.6	40.6
Geraldine High School	451	601	29.6	43.1	27.5	40.5
Massey High School	485	1552	30.5	37.4	43.7	40.5
Napier Boys' High School	449	1140	38	44	38.9	40.1
Rutherford College	462	1366	33.9	28.4	42.9	40.1
Akaroa Area School	450	131	26.7	16.7	75	40
Nelson College	435	902	40.6	37.8	42	39.8
Rototuna Senior High School	460	778	0	30.2	42.4	39.8
Rongotai College	430	726	34.1	37	43.9	39.7
Campion College	432	447	36.5	52.2	49.3	39.7
Mount Maunganui College	456	1748	30.9	37.1	39.6	39.4
Twizel Area School	435	223	14.3	30	50	39.3
Auckland Seventh-Day Adventist H S	497	329	29.5	40.6	33.3	39
St Patrick's College (Silverstream)	431	714	54	52.1	43.4	38.5
Palmerston North Boys' High School	437	1711	43.9	42	39.3	38.5
Roncalli College	447	498	43.6	31.1	42.7	38.5
Glenfield College	474	482	40.6	34.8	30.4	38.5
Whangaparaoa College	446	1610	42.1	29.8	38.7	38.4
Kaipara College	459	816	37.8	27.3	28	38.3
Otumoetai College	448	1842	35.6	33.1	39.5	37.5
Maniototo Area School	460	146	15.4	16.7	25	37.5
Papatoetoe High School	476	1363	33.9	34.6	33.1	37.5
Longburn Adventist College	483	184	21.2	45.5	51.2	37.1
Te Aute College	529	71	26.7	23.5	20	36.8
Amuri Area School	443	338	12.5	25	19	36.7
Timaru Girls' High School	466	382	46.6	42.6	46.4	36.1
Riccarton High School	442	1043	43.3	44.4	44.7	35.7
Rosehill College	468	1536	27.7	26.5	26.6	35.6
Darfield High School	440	729	40.5	37.4	41.2	35.2
St Thomas of Canterbury College	427	674	29.7	29.4	41	35.1
St Bernard's College	440	657	45.8	48.5	41.4	34.7
Timaru Boys' High School	445	652	38.8	29.3	27.5	34.4
Mackenzie College	447	163	58.6	51.7	25	34.4
Bayfield High School	458	576	34.3	33.3	41.8	34.4
Gisborne Girls' High School	490	709	32.4	35.5	37.9	34.4
Mount Hutt College	436	489	34.7	40	48	34.2
Cromwell College	446	561	52.2	35.6	30.5	34.2
Rotorua Lakes High School	471	670	29.5	31	39.9	33.8
Tauraroa Area School	473	500	27.3	23.6	42.1	33.8
Avonside Girls' High School	471	1087	41.2	42.4	35.2	33.7
Kaitaia Abundant Life School	498	167	14.3	12.5	27.8	33.3
James Hargest College	444	1841	46	42.7	41.2	32.9
Taiari College	455	1219	39.7	35.3	37.7	32.7
Central Southland College	457	533	32.2	35.8	40.4	32.6
Hauraki Plains College	463	834	38.4	34	35.4	32.1
Otamatea High School	485	564	22.2	25.4	39	31.9
Tauhara College	475	653	22	16.6	28.4	31.8
Golden Bay High School	448	304	22.5	29.2	28.6	31.7
One Tree Hill College	474	1184	31.6	34.2	42.2	31.5
Henderson High School	480	966	34.7	43	33	31.3
Horowhenua College	492	696	25.7	26.2	34.6	31.3
New Plymouth Boys' High School	444	1394	30.2	35.5	35.8	31.2
Waimea College	442	1433	40.5	41.1	34	31.1
Shirley Boys' High School	463	1274	32.7	27.9	34.1	31.1
Upper Hutt College	464	1052	26.1	25.3	30	30.9
Rangiora High School	448	1612	35.6	36.9	37.8	30.8
Lawrence Area School	457	133	21.4	20	22.2	30.8
Kuranui College	474	754	23.1	27.3	32	30.6

Percent of LEAVERS with UE						
Names	EQI	Roll	2018	2019	2020	2021
Taranua College	508	396	16.4	16.2	26.8	30
Tauranga Boys' College	453	2102	28.5	32.6	35.3	299
Papamoa College	458	1653	38.7	30.2	32.4	29.4
Oxford Area School	461	490	35.5	38.7	8.8	29.4
Waiau Area School	522	118	0	0	12.5	29.4
Pukekohe High School	462	1774	27.9	26.5	27.9	28.9
Whangamata Area School	466	512	13.3	21.6	32.6	28.9
Nayland College	464	1418	23.5	24.4	32.2	28.5
Kelston Girls' College	509	445	29.5	38.3	27.5	28.5
Onehunga High School	488	961	28.2	29.1	30.1	28.4
Bay of Islands College	530	433	16.3	10.1	14.5	28.4
Aotea College	447	1117	29.8	25	25.6	28.2
Dunstan High School	445	556	38.2	45.3	40.9	28.1
Morrinsville College	477	674	32.3	24.5	27.5	28.1
Ellesmere College	455	494	30.9	36.4	37	28
Papanui High School	462	1574	34.3	29.2	33.8	28
Hastings Girls' High School	506	598	38.8	34	36.9	27.8
Onewhero Area School	459	484	37	17.5	33.3	27.3
South Westland Area School	485	110	50	20	7.1	27.3
Bishop Viard College	509	304	25	21.6	25	27.3
Karamu High School	482	878	24.5	26.8	33.2	27.2
Feilding High School	470	1586	27.8	27.1	35	27
Waitakere College	486	1507	22.4	29.4	29.7	27
Menzies College	483	330	22.2	26.7	25.6	26.8
Motueka High School	456	726	21.8	38.8	24.3	26.7
Gisborne Boys' High School	491	819	25.7	22.1	32.3	26.5
Central Hawkes Bay College	491	540	23.8	28.4	20.7	26.4
Otaki College	485	462	22.1	13.3	30	26.2
Whangārei Boys' High School	467	1284	19.8	27.8	27.7	26
Heretaunga College	472	826	25.6	22.2	31.1	26
Wairarapa College	468	1043	34.5	31.4	34.1	25.8
Hastings Boys' High School	506	760	30.9	37.6	29.2	25.5
Thames High School	483	406	32.2	38.5	36.7	25
Trident High School	492	944	34.4	26	42.5	25
Ashburton College	467	1248	29.7	24.9	26.6	24.6
Cullinane College	495	356	18.6	39.7	46.4	24.6
South Otago High School	471	465	29.1	30.5	29.7	24.5
Western Heights High School	492	1104	26.7	20.9	28.1	24.3
Ao Tawhiti Unlimited Discovery	441	662	28.8	30.2	22.7	24.2
Whakatane High School	471	1047	25.6	30.2	27.7	24.2
Wesley College	512	366	34.5	33.3	50.8	24
Otahuhu College	513	977	18.6	19.6	23.2	23.9
Whanganui High School	479	1381	34	31.5	33.1	23.8
Opunake High School	498	292	19.1	23.1	24.6	23.7
Rotorua Boys' High School	502	1087	14.2	18.1	28.6	23.7
Dargaville High School	506	424	23.2	19.8	23.6	23.7
Nga Taiatea Wharekura	505	275	42.4	35.7	48.8	23.6
Manurewa High School	510	2041	18	16.6	21.1	23.6
Kaikorai Valley College	496	450	23.5	21.3	14.3	23.3
Ōtorohanga College	511	269	12.5	8.2	15.5	23.3
Marlborough Boys' College	454	925	24.9	22.5	25.3	23.1
Katikati College	456	795	30.4	33.9	35.6	23.1
Raglan Area School	459	558	16.2	28.9	18.9	23.1
Taupo-nui-a-Tia College	464	1030	30.1	22.5	22.6	23.1
Mountainview High School	485	521	22.7	23.4	15.6	22.9
Te Aroha College	493	308	26.7	12.5	32.2	22.9
Whanganui Girls' College	496	323	37.7	20	32.4	22.7
Hagley Community College	472	1858	29.8	32.8	32	22.5
Te Awamutu College	476	1296	23.3	22.9	22.2	22.4
Tuakau College	493	810	10	16.5	16.7	22.3

Percent of LEAVERS with UE						
Names	EQI	Roll	2018	2019	2020	2021
Patea Area School	539	179	7.1	8.3	10.5	22.2
De La Salle College	491	940	26.1	28.3	37.4	22
Ruapehu College	499	202	16.7	20.5	20	22
Te Kauwhata College	499	533	20.8	10.3	11	21.9
Dannevirke High School	491	419	23.6	24	19.3	21.8
Gore High School	479	454	39.8	23.2	26.8	21.4
Bream Bay College	479	535	28.2	29	29.1	21.2
Freyberg High School	484	1032	17.6	21.6	18.4	21.1
Hurunui College	470	204	9.5	16.7	13.3	20.8
Kaiapoi High School	463	1005	27.3	24.5	29.8	20.7
Rodney College	484	359	23.1	29.9	19.5	20.7
Taita College	523	355	21.2	15.7	17.4	20.6
Awatapu College	487	876	17.8	21.2	19	20
Kia Aroha College	534	206	14	22.2	46.7	20
Edgewater College	499	636	28.7	29.8	28	19.8
Alfriston College	501	1062	19.1	19.2	16.7	19.7
Waitaki Boys' High School	485	385	26.1	8.8	17.3	19.6
Westland High School	476	351	16.4	24	16	19.4
Mercury Bay Area School	465	986	24.3	29.1	25.5	19.3
Te Puke High School	490	835	22.7	20.1	21.9	19.1
Aorere College	500	1544	18.8	18.7	25.9	18.7
Tolaga Bay Area School	526	283	15.4	11.1	13.9	18.5
Waiuku College	470	886	23.9	13.4	21.7	18.3
Matamata College	475	737	20.8	23.6	20.8	18.1
Kamo High School	501	804	22.8	11.6	21.3	18.1
Queen Charlotte College	487	369	20	21.4	21.1	18
Hornby High School	500	786	9.7	17.2	18.6	18
Melville High School	520	591	17.2	12.4	24.4	17.7
Taipa Area School	534	336	22.2	10.8	2.7	17.6
Edgcumbe College	518	168	8.8	4	10.4	17.1
Mairehau High School	519	369	18	15.2	22	17.1
Tamaki College	534	645	9.5	6.2	17	17
Wainuiomata High School	511	571	25.3	17.3	10.8	16.9
Kaikohe Christian School	500	158	18.2	25	20	16.7
Reefton Area School	507	158	25	30	22.2	16.7
Te Kura o Hirangi	535	247	0	0	14.3	16.7
Tangaroa College	525	764	15.9	19.2	24.9	16.5
Sir Edmund Hillary Collegiate Senior School	531	544	10.9	17.2	12.7	16.2
Southland Boys' High School	467	1025	23.7	16.3	21.7	15.8
Hillmorton High School	476	1074	23	14.8	32.6	15.8
Waihi College	486	591	20.8	16	23	15.7
Fraser High School	509	1341	9.6	8.5	14	15.4
Buller High School	481	333	28	24.6	23.7	15.3
Hawera High School	n/a	709	17.9	19.4	24	15.2
Reporoa College	510	211	10.4	4	15.4	15
Waiopahu College	505	580	24.8	13.3	32	14.9
Te Kuiti High School	514	287	11.9	10.5	16.1	14.5
Southern Cross Campus	518	1420	14.6	20.4	14.5	14.5
Mangere College	525	705	7.3	6.6	10.7	14.4
Aparima College	491	185	16.7	22.7	28.6	14.3
Manawatu College	530	267	12.5	22.5	15.9	14.1
Spotswood College	494	896	15.1	17.6	18.8	14
Kaitaia College	456	891	16.9	17.1	14.2	13.9
Tokomairiro High School	492	222	24	19.4	27.6	13.9
Te Aratai College	518	882	11.3	14.3	16.8	13.9
East Otago High School	483	161	9.1	31.6	20.7	13.6
Opihi College	496	265	22.9	8.9	26.5	13.6
Greymouth High School	487	554	24.3	21.7	28.2	13.4
Makoura College	527	286	8.7	12.7	15.4	13.3
Naenae College	503	755	22.7	17.8	17.9	13.2

Percent of LEAVERS with UE						
Names	EQI	Roll	2018	2019	2020	2021
Collingwood Area School	455	155	25	16.7	50	12.5
Rotorua Girls' High School	525	680	18.7	17.2	292	12.5
James Cook High School	535	1363	3.5	3.7	13.3	12.5
Wairoa College	532	471	9.3	2	11.3	12.3
Inglewood High School	475	472	21.6	14	17.5	12.2
Tokoroa High School	521	484	16.5	19.4	24.8	12.1
Kelston Boys' High School	507	658	21.6	19.3	16.6	12
Mana College	521	499	23	15.4	16.5	11.9
Tapawera Area School	491	168	12.5	0	0	11.8
Ngata Memorial College	554	105	0	0	0	11.8
William Colenso College	547	422	8	15.1	8.8	11.6
Waimate High School	480	258	13.9	27	19.4	11.1
Rangitikei College	517	284	19.7	14.5	9	11.1
Lytton High School	520	683	13.6	14	14.4	10.9
Stratford High School	491	542	20.3	16.8	21.4	10.8
Paeroa College	507	288	14.3	18.2	21.1	10.8
Kaikoura High School	478	206	25	4.8	47.8	10.7
Whangaroa College	539	127	5.6	7.1	7.1	10.5
Okaihau College	514	336	17.9	19.4	11.9	10
Fairfield College	527	708	12.4	5.4	6.3	9.7
Porirua College	531	607	10.5	19.4	13.1	9.6
Aurora College	545	554	10	6.9	10.6	9.6
Forest View High School	513	398	14	9.3	13	9.4
Taihape Area School	508	259	13.3	25	4.2	8.8
Tarawera High School	541	427	11.1	10.7	16.7	8
Papakura High School	541	939	5	4.3	6.4	7.9
Tikipunga High School	551	312	1.9	18	8.2	7.8
Te Aho o Te Kura Pounamu	505	7353	10.9	12.9	12.8	7.3
Te Waha O Rerekohu Area School	545	120	13.3	25	4.2	7.1
Tamatea High School	534	321	22.1	12.5	11.1	7
Ruawai College	506	110	18.8	15.8	19.4	6.9
Hukarere Girls College	549	81	22.2	50	36.4	6.7
Tongariro School	540	355	7.7	2.3	12.8	6.1
Putaruru College	512	409	7.2	6.8	9	6
Waitara High School	524	385	9.7	11.4	17.4	6
Opotiki College	536	331	13.4	7.6	8.6	5.8
Ngaruawahia High School	539	296	5.3	15.6	17.8	5.1
Queen Elizabeth College	553	318	7.5	7.8	7.5	4.7
Huntly College	549	204	12.2	4.3	6.2	4.4
Piopio College	507	136	7.7	14.3	5	3.7
Murupara Area School	557	193	4.8	3.4	5.3	3.2
Haeata Community Campus	546	597	1.4	10.8	2	2.9
Flaxmere College	564	291	6.8	7.7	3.4	2.2
Northland College	554	317	3.5	1.4	4.5	1.7
Taumarunui High School	525	289	6.3	8.2	7.9	1.4
Whanganui City College	551	297	3.3	13	10.1	1.4
Raphael House Rudolf Steiner Area School	402	311	0	65.5	62.5	0
Taranaki Diocesan School for Girls	462	112	46.4	50	46.7	0
Cheviot Area School	463	183	8.3	12.5	x	0
Chanel College	467	230	38.9	47.6	38.5	0
Murchison Area School	478	182	0	7.1	10	0
Rai Valley Area School	484	108	40	x	18.2	0
Coromandel Area School	504	238	25	50	22.2	0
Te Wharekura o Ruatoki	524	207	26.7	20	16.7	0
Opononi Area School	532	130	0	7.1	11.1	0
Broadwood Area School	555	100	6.7	14.3	18.2	0
Mangakahia Area School	559	93	0	0	0	0